

# The PMQG *Habitat* Challenge Winners

In August 2011, the Philadelphia Modern Quilt Guild participated in a nationwide Modern Quilt Guild challenge involving *Habitat*, a new fabric collection by designer Jay McCarroll for FreeSpirit. Individual chapters were tasked with creating their own way to play along with the *Habitat* project.

Here's what the Philadelphia gang chose to do: They had an inside track because Jay is a hometown boy, so they kicked off the challenge by inviting him to speak at a guild meeting, and then later, asking him to choose the top blocks from those submitted within the PMQG for the challenge.

(Note: News coverage of the PMQG results and Jay's thoughts on the winning blocks are on Generation Q's website.)

Our thanks to the winning stitchers for sharing the directions to their designs.



# Anna Zeigner

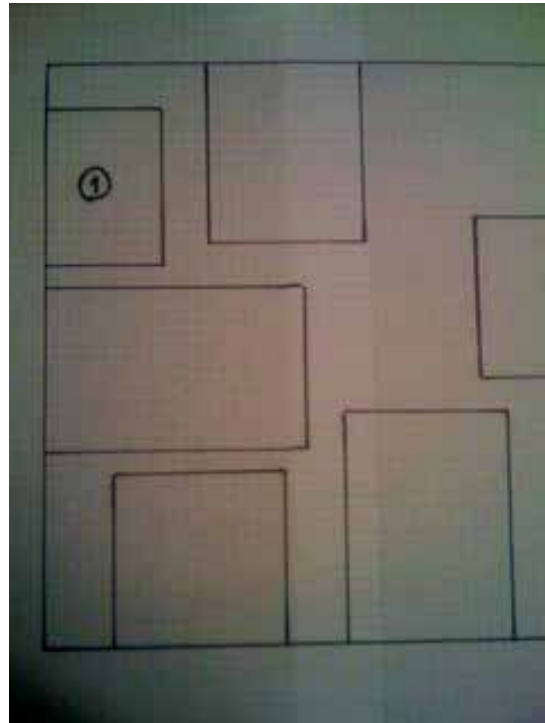
1. On a piece of paper, draw a 12 1/2" square.

2. Cut chosen prints into 3 1/2" widths and various lengths.

3. Arrange the fabric pieces on the drawn square, keeping the 3 1/2" width and various lengths.

4. Cut strips of background fabric in different widths and sew strips of solid around the first Habitat print according to the drawing. Each print piece + the solid piece becomes a small block on its own. When one small unit doesn't match up to a previous one, use half-sewn seams to attach a small unit to the next.

Says Anna: "The sewing part was quite challenging and demanded some strategizing as to which unit should get attached to which, in order to limit the amount of seams. I recommend planning the sewing out carefully with the help of a sketch on paper."

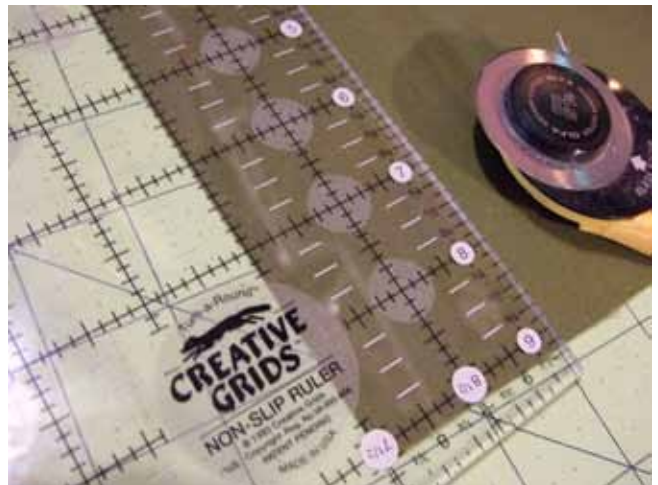


# Susan McKey

1. I sketched out my idea, knowing that I wanted to "cast" each print in its "role" of the house "portrait." I wanted to be literal and abstract, to tell a whole story within the block, but also let it seem to belong to something larger. I like using different colored pencils to correspond with different prints. Note: Measurements are approximated.



2. The "center beam" of the house is a straight strip 1½" wide by about 5". Keep all strips straight, instead of wonking.



3. and 4. Start "building!"



5. As happens with improvised blocks, sometimes the seams have funny extra bits...



5a. ... which require diligent trimming.



6. and 7. I continue building, always referring to my sketch and fabric "cast list."



8. Trim to roof shape.



9. Block so far. Now it needs a ceiling.



10. The solid green framework after the "center beam" is thinner; strips start between  $\frac{3}{4}$ " and 1" to end with  $\frac{1}{4}$ " or  $\frac{1}{2}$ " sashing as the framework.



11. Check block so far against sketch.



12. Add "roof." These strips might be 2" wide or 1 1/2" after sewing.



13. and 14. Add "sky." Trim excess.



15. I like the idea of the Pollen print as being above the "sky", almost as if it is part of the sky (because it always seems to be in the spring in Philadelphia).

16. Square up the block.

17. Finished square. I oriented it "pointing" upward, but of course it can go any way. That's the abstract part about it!



# Karen Dever

## ✧ Philly Dazzler ✧

### Fabric Requirements

4 1/2" x 22" of seven different fabrics

Using paper pieced pattern provided (see next page), make 4 paper copies of pattern.

Select seven fabrics.

Write on section of pattern where fabric is to be used and piece in number order.

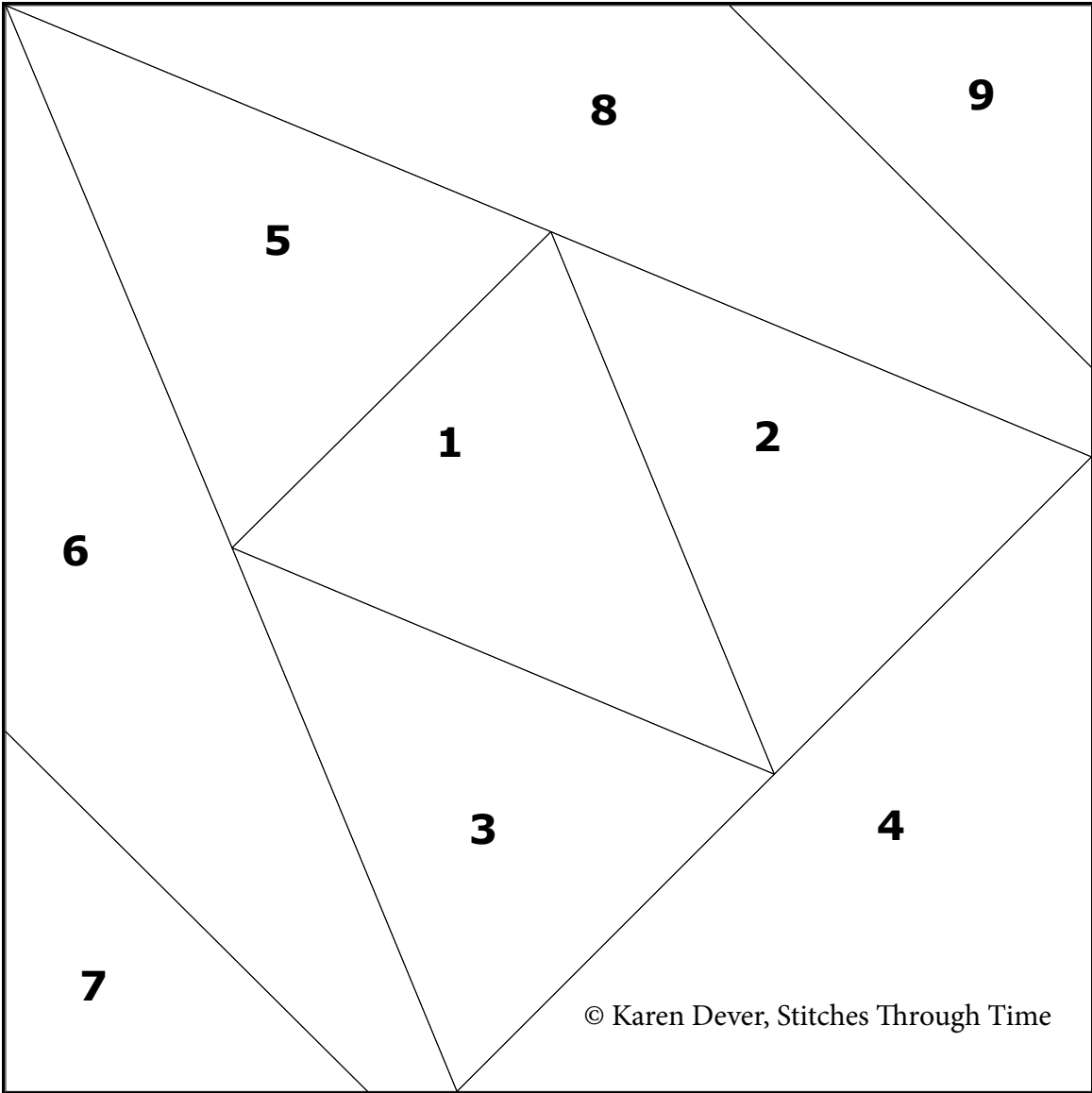
Do the same thing for each of the quadrants.

Resize each to a 6 1/2" unfinished block (1/4" beyond line).

Piece the four quadrants together as shown in photo (right).

Resize to a 12 1/2" unfinished block.







# Monica Cuartero



The finished size is 12" x 12", but aim to make the block around 13-14" square so you have some wiggle room to crop the 12 ½" square the way you like it.

Fabrics you will need:

Jay McCarroll *Habitat* fabrics:

Raise the Roof - Brown

For The Birds - Charcoal

For The Birds - Peach

Birch - Pink

Birch - Blue

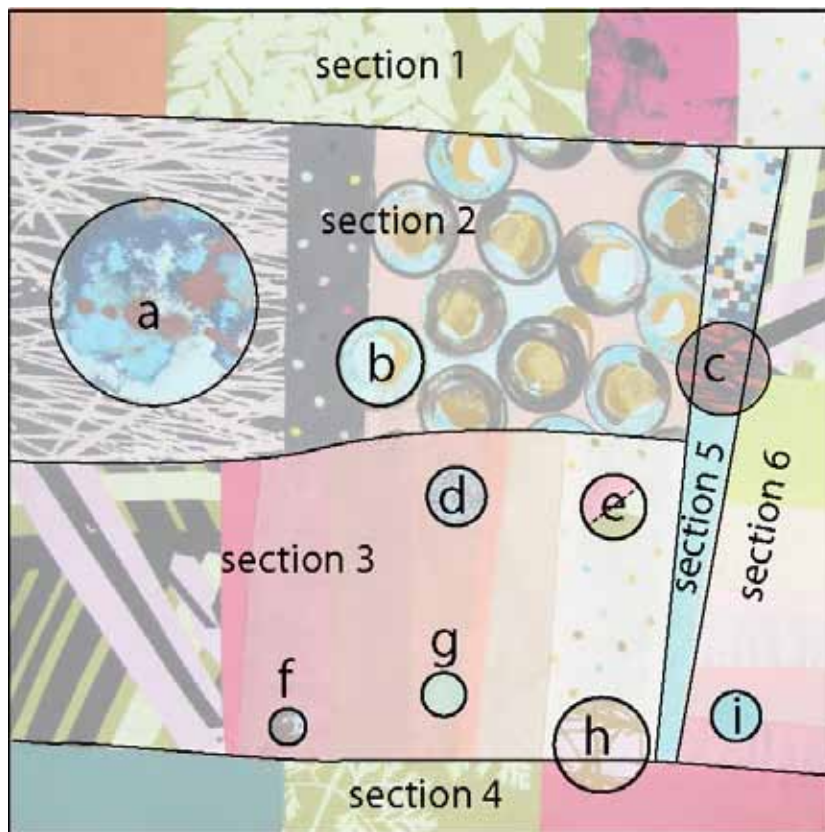
Birch - Peach

Drop Cloth in Blue

West River Drive Botanical Leaves Green

City Planting - Green

Pollen - Peach



Mix of Solids:

Gradations from light pink to hot pink

Yellow

Dark turquoise, light turquoise

Bright orange

(Sizes are all approximate because this is an improvised style of block. Make the strips a bit larger than the finished size so you can trim the excess off to make a square block.)

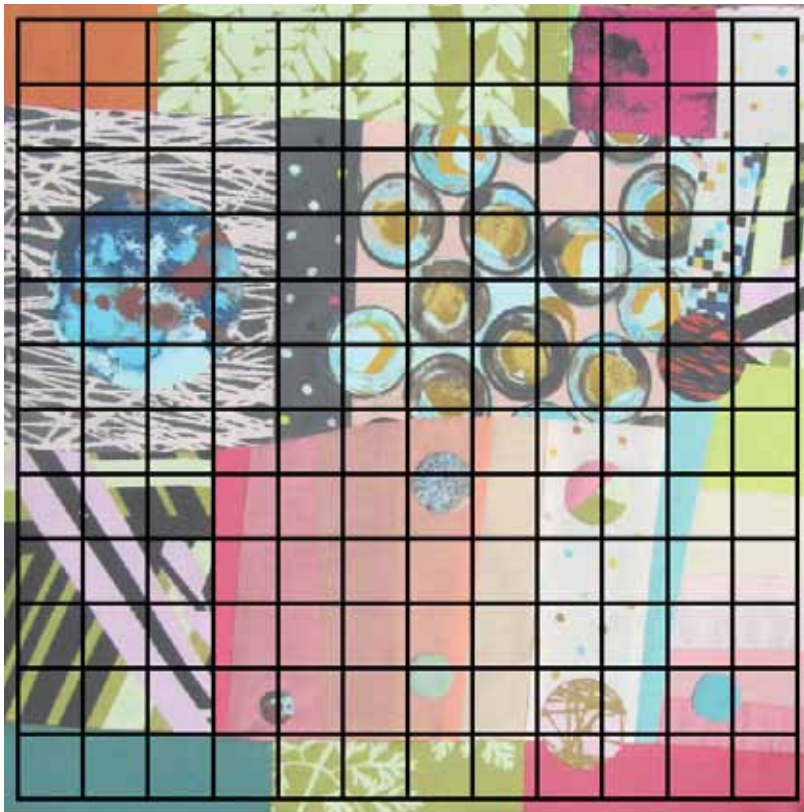
See attached illustrations for sections and placement.

Section 1:

Sew together a 3 1/2" x 13" strip (going from left to right) using bright orange, West River Drive Botanical Leaves Green, Drop Cloth in Blue, (section out the bright pink part) and For The Birds – Peach.

Section 2:

Sew together a 6.5" x 12" strip using (going from left to right) Birch – Peach, For The Birds – Charcoal, Pollen – Peach



Each square = 1 inch

### Section 3:

Sew together a 6.5" x 10" strip using Raise the Roof – Brown, then a gradation from hot pink to light pink, then For The Birds – Peach.

### Section 4:

Sew together a 2" x 13" strip using equal parts of dark turquoise, West River Drive Botanical Leaves Green, hot pink.

### Section 5:

Sew together a 2" x 10" strip using light turquoise and City Planting – Green.

### Section 6:

Sew together a 3" x 10" strip using a gradation of solids going from medium pink to yellow, then Raise the Roof - Brown.

Sew section 2 and section 3 together to make one piece.

Next, sew sections 5 and then 6 to the side of that piece.

Then sew section 1 to the top and section 4 to the bottom. Applique the 9 different circles.



A: Drop Cloth in Blue (fussy-cut what you think is the most interesting part)

B: Pollen – Peach – Find a pollen piece that is partially sliced off, and find that pollen on the fabric, cut it out and place it over top to make the pollen “pop-out”

C: Birch – Blue

D: Drop Cloth in Blue (So many colors and textures in this fabric, pick any)

E: I used pink and West River Drive Botanical Leaves Green

F: Drop Cloth in Blue

G: Light blue

H: Birch – Pink

I: Turquoise

# Candi Weinrick

6 different fabrics needed

Cut the following:

From fabric A

{4} 2 7/8" squares (for half-square triangles / HST)

{4} 2.5" x 4.5" rectangles (for flying geese units)

{1} 5.25" square (for quarter-square triangle / QST)

From fabric B

{4} 2.5" squares (corner squares)

{1} 5.25" square (for quarter-square triangle / QST)

From fabric C

{4} 2 7/8" squares (for half-square triangles / HST)

From fabric D

{8} 2.5" squares (for flying geese units)

From fabric E

{4} 2.5" X 4.5" rectangles

From fabric F

{4} 2.5" squares



Create your center quarter square triangle unit by using 5.25" squares of fabric A and fabric B. Place fabrics right sides together, draw a line diagonally from corner to corner on the wrong side of one of the fabrics.



Sew  $\frac{1}{4}$ " on each side of the drawn line. Cut on the drawn line. Open and press seams towards the dark fabric.



Place the two units that you just created right sides together, again draw a diagonal line from corner to corner and sew  $\frac{1}{4}$ " on each side of the line. Cut on line and press the seam open. This will create 2 quarter-square triangle units. Save one for another use; you only need one for this block. Making the units this way prevents bias edges on the outside of the units.



Flying geese units: Using your 2 1/2 " x 4 1/2 " rectangles of Fabric A place a 2 1/2 " right sides together on the right hand side of the rectangle. Draw a diagonal line from corner to corner on the 2 1/2 " square.



Sew on the line.



Press fabric and trim off the extra fabric, leaving a 1/4" seam allowance.



Do the same process on the left hand side of the rectangle. Repeat to create 4 flying geese units.



HST units: Place your 2 7/8" squares of Fabrics A & C right sides together, draw a line diagonally from corner to corner and sew 1/4" away on both sides of the line. Cut on the line and press the seams open. You should have 8 HST units.



Take a Fabric E rectangle and sew a Fabric F square to each end of the rectangle. Press seams open. Make 2 units.

Sew the remaining Fabric E rectangles to the sides of your QST unit with Fabric E matching up with the sides of Fabric A. Sew the FEF units to the top and bottom of the QST unit. Press seams open.

Take the Fabric A/C HSTs and sew to each side of the flying geese units. Press seams open.

Take a HST/Flying Geese/HST unit and sew a Fabric B 2.5" square to each end. Create 2 units. Press seams open.

Take the remaining 2 HST/Flying Geese/HST units and sew to each side of the QST Center unit. Press seams open.

Sew the B/HST.

